

Comparative study of Mycobacterium tuberculosis and Mycobacterium bovis protein profiles

Mycobacterium tuberculosis ve Mycobacterium bovis protein profillerinin karşılaştırmalı çalışması

Mohammad Kazem Sharifi Yazdi¹, Amir Houshang Beheshnejad², Azim Hedayatpour³, Sara Sharifi-yazdi⁴, Fariborz Mehrani⁵

¹ Zoonosis Research Center, Department of Medical Laboratory Sciences, Tehran University of Medical Sciences, Tehran, Iran

² Eye Research Center, Farabi Eye Hospital, Tehran University of Medical Sciences, Tehran, Iran

³ Department of Anatomy, School of Medicine, Tehran University of Medical Sciences, Tehran, Iran

⁴ Medical student, School of Medicine, Tehran University of Medical Sciences, Tehran, Iran

⁵ Anesthesia Department, School of Allied Medicine, Tehran University of Medical Sciences, Tehran, Iran

ORCID ID of the authors

MKS: 0000-0001-9060-5908

AHB: 0000-0002-3485-4587

AH: 0000-0002-1036-0697

SS: 0000-0001-9350-2947

FM: 0000-0001-8917-5285

Corresponding author / Sorumlu yazar:

Mohammad Kazem Sharifi Yazdi

Address / Adres: Zoonosis Research Center, Department of Medical Laboratory Sciences, Tehran University of Medical Sciences, Tehran, Iran

Tel: +982188983919

E-mail: mksharifi@tums.ac.ir

Ethics Committee Approval and Financial Disclosure: This research was supported by Tehran University of Medical Sciences and Health Services Grant 22146.

Etik Kurul Onayı ve Finansal Destek: Bu araştırma Tıp Bilimleri Tahrân Üniversitesi ve Sağlık Hizmetleri Grant No: 22146 tarafından desteklenmiştir.

Conflict of Interest: No conflict of interest was declared by the authors.

Çıkar Çatışması: Yazarlar çıkar çatışması bildirmemişlerdir.

Received / Geliş Tarihi: 21.04.2018

Accepted / Kabul Tarihi: 10.05.2018

Published / Yayın Tarihi: 12.05.2018

Copyright © 2018 The Author(s)

Published by JOSAM

This is an open access article distributed under the terms of the Creative Commons Attribution-NonCommercial-NoDerivatives License 4.0 (CC BY-NC-ND 4.0) where it is permissible to download, share, remix, transform, and build upon the work provided it is properly cited. The work cannot be used commercially without permission from the journal.



Abstract

Aim: Despite the drug resistance Mycobacterium bovis and Mycobacterium tuberculosis (MTB) are still regarded as two of the global health problems in the world. In the present study, a comparison was made between protein profiles of Mycobacterium bovis and MTB in order to achieve effective biomarkers for diagnosis of tuberculosis.

Methods: The clinical samples, sputum and gastric lavage (and the other samples) were processed by N-acetyl-L-cysteine-sodium hydroxide methods and consequently were cultured on Lowenstein-Jensen medium. Mycobacterium tuberculosis and bovis strains were distinguished according to the biochemical tests and susceptibility testing system. Colonies were grown in 7H9 medium and membrane and secretory proteins were extracted, purified by ammonium sulfate and refrigerated alcohol methods.

Results: The protein contents were measured by Bradford method. Comparison of protein bands in each strain were performed by one dimensional electrophoresis.

The major discrepancy between the two strains in the banding separation membrane proteins could be observed in 45 and 60 KDa and also less than 45 and 14 KDa.

Conclusion: The results showed that discrepancy in the proteins bands could be used as protein effective biomarker for tuberculosis diagnosis. We should use antibody against tuberculosis for further investigation for rapid tuberculosis diagnosis.

Keywords: Mycobacterium bovis, Mycobacterium tuberculosis, Membrane and Secretory protein

Öz

Amaç: İlaç direncine rağmen Mycobacterium bovis ve Mycobacterium tuberculosis (MTB) hala dünyadaki küresel sağlık sorunlarından iki tanesi olarak kabul edilmektedir. Bu çalışmada, tuberküloz tanısı için etkili biyobelirteçler elde etmek amacıyla Mycobacterium bovis ve MTB protein profilleri arasında bir karşılaştırma yapılmıştır.

Yöntemler: Klinik örnekler, balgam ve gastrik lavaj (ve diğer örnekler), N-asetil-L-sistein-sodyum hidrosit yöntemleri ile işlendi ve sonuç olarak Lowenstein-Jensen ortamı üzerinde kültürlendi. Mycobacterium tuberculosis ve bovis suşları biyokimyasal testlere ve duyarlılık test sistemine göre ayrıldı. Koloniler 7H9 ortamında büyütülmüş ve membran ve sekretuar proteinler ekstrakte edilmiş, amonyum sülfat ve soğutulmuş alkol metotları ile saflaştırılmıştır.

Bulgular: Protein içerikleri Bradford metodu ile ölçüldü. Her bir suşta protein bantlarının karşılaştırması tek boyutlu bir elektroforez ile gerçekleştirilmiştir. Bant ayırma membranı proteinlerindeki iki suş arasındaki temel farklılık, 45 ve 60 KDa'da ve ayrıca 45 ve 14 KDa'dan daha az olarak gözlemlenebildi.

Sonuç: Sonuçlar, protein bantlarındaki farklılıkların tuberküloz tanısı için protein etkin biyobelirteç olarak kullanılabileceğini gösterdi. Hızlı tuberküloz teşhisi için ileri tetkiklerde tuberküloz'a karşı antikor kullanmalıyız.

Anahtar kelimeler: Mycobacterium bovis, Mycobacterium tuberculosis, Membran ve sekretuar protein

Introduction

Tuberculosis is a global problem. In 2014, estimates indicate that 9.6 million new tuberculosis cases, that with early diagnosis and proper treatment, nearly all of them were preventable [1]. The world "Stop tuberculosis strategy" program for the period 2006-2015 was planned to achieve this goal [2]. *Mycobacterium bovis* is one of the oldest and most important zoonosis diseases as well as one of the numerous global health challenges. The mortality rate of *M. bovis* is more than *Mycobacterium tuberculosis* [3].

The complex of *Mycobacterium tuberculosis* (MTB), including *M. tuberculosis*, *M. africanum*, *M. bovis*, Bovis BCG, *M. caprae*, *M. microti*, *M. pinnipedii*, *M. dassie bacillus* and *M. canettii*, although shows different phenotype characteristics in their biochemical tests, but they have high similarity in genetic terms [4]. To differentiate complex members is essential to promote successful treatment, especially in areas where the disease is epidemic or exposure to human and animal is high [5]. The classic diagnosis method between *M. tuberculosis* and *M. bovis* based on drug sensitivity, pyrazinamide activity, nitrate reduction, niacin accumulation and growth in the thiophene 2-carboxylic acid hydrazide [6]. The only way to protect people against tuberculosis are early diagnosis, protection and treatment and the current differential methods used despite their value do not meet the need for rapid diagnostic methods. Furthermore *M. tuberculosis* strains resistant to antibiotics, lack of a comprehensive performance BCG vaccine in adult makes necessity for the development of rapid diagnostics and prevention will become a global necessity [7]. One of the suitable ways in the field is the study of protein profiles of *M. bovis* and MTB in order to achieve effective biomarkers for diagnosis of tuberculosis. As mentioned above MTB complex shows different phenotypic profile and drug sensitive strains of MTB are spread almost all parts of the country that makes important from epidemiological point to study. Membrane and secretory protein have effective role in stimulating cellular immunity and are important in diagnosis of tuberculosis. MTB cultures filters contain various antigens in which many of them are identifiable by monoclonal antibody and are evaluated. Many of these antibodies are secreted proteins released by the cell wall or dead bacteria. These are able to generate an immune response in the early stages of infection in patients [8]. Although complete information of genomic and proteomic of *M. tuberculosis* had been obtained but unfortunately not appropriate candidates for vaccine nor have protein profile model to distinction between species been introduced.

Ying Xiong et al. [9] had studied membrane proteins of H37Rv strains of *M. tuberculosis* by one-dimensional gel electrophoresis and mass spectrometry They could integral 349 membrane protein, in which 42 of them was reported and discussed for the first time. The aim of this study was to evaluate differences in protein profiles of strains of *Mycobacterium tuberculosis* and *M. bovis* in order to obtain suitable biomarker to diagnosis between the two strains.

Materials and methods

In total 100 samples including 80% sputum sample, 7% gastric lavage, 5% axillary node aspirate, 3.5% biopsies, 2% hip, and 1.5% bronchial washings were collected. Two standard strains of RB1P11 and 7.121 were used as control. The samples were cultivated by N-acetyl-L-cysteine in Lowenstein - Jensen Medium and thiophene 2 carboxylic acid hydrazide medium were used for differentiation of *M. bovis* and *M. tuberculosis*. After 8 weeks, Niacin, Catalase and Nitrate reduction and antibiotic susceptibility tests were carried out to identify the strains. Out of 100 tested samples, five were positive. The biochemical and drug sensitivity test showed that these strains were sensitive *Mycobacterium tuberculosis*. These strains were cultured in Middlebrook 7H9 medium for 4 weeks. The supernatants of stationary-phase liquid cultures were collected and used to extract proteins [10]. In order to extract membrane and secretory proteins, strains were cultured into Middle Brook 7H9 broth at 37 ° C and maintained for 4 weeks in order to get in logarithmic growth phase. After that it was centrifuged at 3000 rpm at 3°C for 45 minutes, then the supernatant was removed. The supernatant was washed with phosphate-buffered saline (PBS). The extraction buffer was (10 mM Tris containing protease inhibitors (PMSF) 1mM, DNase 1 mg and Triton x114 - 5%. The resulting solution was centrifuged at 5000 rpm at -3 ° C for an hour. Composition with saturated solution of ammonium-sulfate 70% was used to distinct available proteins in the resulted supernatant and kept in Refrigerator for 18 hours. Samples were centrifuged at -4°C at 15000 rpm and obtained deposits were solved in 1×PBS.

Amount of protein in deposited solutions was obtained by Bradford protein analysis. Dialysis in 1x PBS was used to remove existing salts in the protein solutions. Protein solution inside the dialysis bag was placed in a solution of PBS 1x for 24 hours and the buffer was replaced on a regular basis, at least 3 times [11-13]. Ultimately, deposited proteins were investigated by SDS-PAGE, Blue Silver Staining and Coomassie Blue R-250. SDS-PAGE for membrane and secretory proteins was performed with 10% and 12.5 % Gel.

Results

From 100 random samples cultivated in Lowenstein – Jensen solid Medium, 5 samples of susceptible *M. tuberculosis* were selected by biochemical and antibiotic susceptibility testing methods along with 5 *M. bovis* strains cultivated in Middlebrook 7H9 medium. The concentration of proteins was defined by Bradford method after they were extracted and standard curve was drawn with bovine serum albumin 1 mg/ml as standard protein. The concentration of membrane and secretory proteins were reported 40-70 and 1-5, respectively. SDS-PAGE of membrane proteins by Gel 10% was carried out with Blue Silver Staining. It was resulted that all strains of *M. bovis* in 5 different patients have same protein patterns and all susceptible strains of *M. tuberculosis* in 5 different patients also have same protein pattern. 15-85KDa and 15-120KDa bands were observed in strains of *M. bovis* and *M. tuberculosis*, respectively. Differences of candidate strains of the susceptible *M. tuberculosis* and *M. bovis* are revealed in picture [2] with arrow and it can be seen

that major differences of these two strains is related to the weighted ranges of 45 and 60 KDa bands.

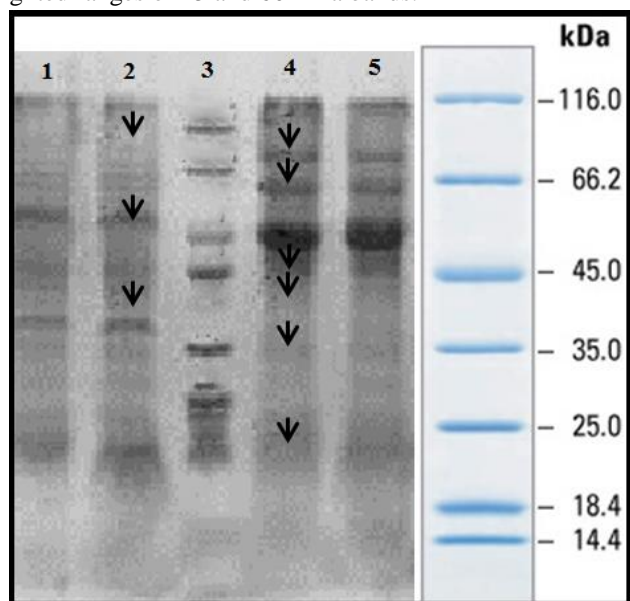


Figure 1: Gel 10%. Columns 1-2, membrane proteins of *M. bovis* strains-columns 3-5, membrane proteins of susceptible *M. tuberculosis* strains. Protein extraction using Ammonium sulfate and Blue Silver Staining methods

SDS-PAGE of secretory proteins were done using 12.5% Gel with Blue Silver Staining and it was perceived that all strains of *M. bovis* in 5 patients are with same protein pattern and all strains of susceptible *M. tuberculosis* in 5 different patients also are with same pattern.

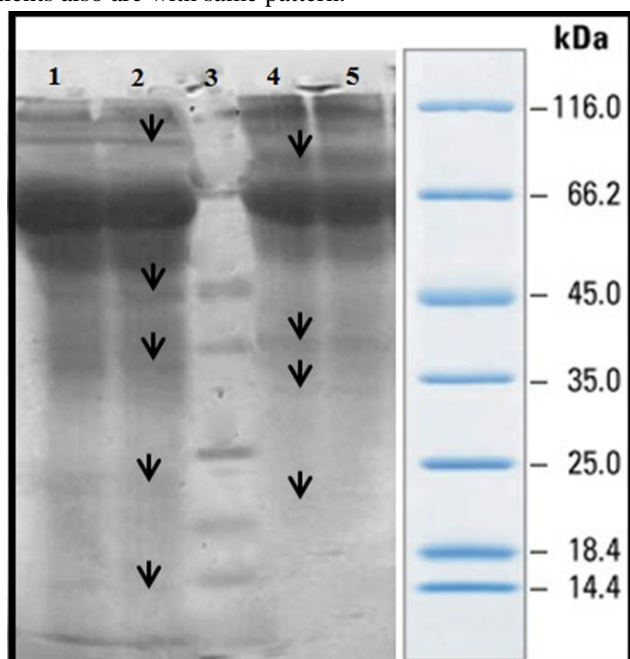


Figure 2: 12.5% Gel, columns 1, 2 secretory proteins of standard *M. bovis* and columns 3-5 *M. tuberculosis* secretory proteins. Protein extraction using Ammonium sulfate and Blue Silver Staining methods

As it is shown from the 25 KDa to less than 66.2KDa *Mycobacterium bovis*, *Mycobacterium tuberculosis* strains clearly had different bands. For example, from the 45 to 50 kDa protein bands of *M. bovis* are differing from *M. tuberculosis*. Between band 10 to 66.2 KDa only 1 or 2 bands are seen with *Mycobacterium tuberculosis*, while 7 different protein bands are seen with *Mycobacterium bovis*. Results of gel electrophoresis, SDS-PAGE on 10% (Figure 1), with Blue Silver staining for membrane proteins of *M. bovis* and *M. tuberculosis* were not same and shows identical and distinct differences in the band 14

to 25 kDa. *Mycobacterium tuberculosis* has some bands which are not seen in *Mycobacterium bovis* (protein band of 15KDa). Furthermore in region 25 to 35 KDa *Mycobacterium tuberculosis* had 32 to 34 KDa which cannot be seen in *Mycobacterium bovis*. 30 kDa protein was seen in *M. bovis* and was not seen *Mycobacterium tuberculosis*. *Mycobacterium tuberculosis* has a 45 kDa protein that is expressed in a very clear and distinct and was not seen in *M. bovis*. The 50-48 kDa protein band seen *M. bovis* and band of around 60, 70 and above 116 kDa in *Mycobacterium tuberculosis* gel electrophoresis of proteins secreted by 12% and Blue Silver staining (G250) differences in protein expression between the two strains of *Mycobacterium bovis* strains seen. These differences in the protein bands in the area 13, 23, 32, 44, 115 kDa are seen in *Mycobacterium tuberculosis* and not in *M. bovis*. On the other hand proteins with molecular weight 18,30,36,85 kDa are seen in *Mycobacterium tuberculosis* and not in *M. bovis* (Figure 2). Differences of candidate strains are displayed by arrow in figure 3. Weighted range of 14- 45 bands is the most significant differences of these two strains.

In 15-115 KDa and 18-114 KDa bands were observed in strains of *M. bovis* and *M. tuberculosis*.

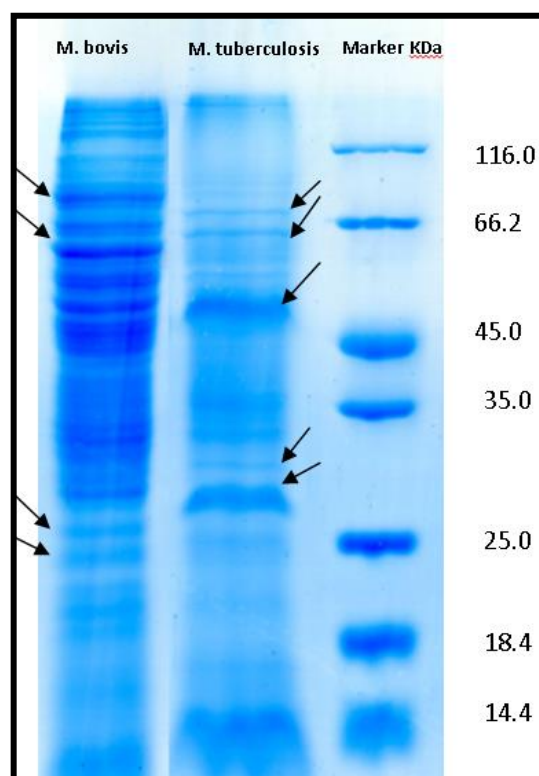


Figure 3: Comparison of protein profiles of *Mycobacterium tuberculosis* and *Mycobacterium bovis* by SDS-PAGE, polyacrylamide gel 10%, Blue Silver Staining and Coomassie Blue R-250

Discussion

Considering that *M. tuberculosis* diagnostic methods including susceptible and resistant to drug susceptible *Mycobacterium* and even *M. bovis* are based on microbiologic methods such as direct smear, cultivation and PCR methods. But cultivation always is considered as gold standard method. The necessity of rapid treatment and easy diagnosis are inevitable considering the Low susceptibility of some of these methods such as direct view slide or long response time to suspected patients to tuberculosis including cultivation in specific

mycobacterium medium. In this study we tried to compare patterns of membrane and secretory proteins between candidate strains of *M. tuberculosis* and *M. bovis* using SDS- PAGE method.

The liquid Middlebrook 7H9 medium was used in the current study and makes bacteria able to synchronize in addition to making possible the study of secretory proteins. Having mineral salts, enrichment materials (such as Albumin), Catalase, dextrose, Sodium Chloride, Glycerol and Polysorbate80 are among its other advantages [14].

In 1998, Cole et al [15] determined the complete genome sequence of *M. tuberculosis* H37Rv and defined the sequences of 3924 Gene. With the help of these genetic information, proteome analysis was done through combination of two-dimensional electrophoresis and mass spectrometry. Almost 800 coding secretory proteins have been recognized by *M. tuberculosis* genome.

In 2003, Jens Mattow et al [16] analyzed supernatant proteins of mycobacterium tuberculosis cultivation using combination of two-dimensional gel electrophoresis and mass spectrometry and determined the N- terminal sequence. About 1250 protein pieces of *M. tuberculosis* H37Rv were identified. This study showed 137 different proteins from which 42 proteins were explained as secretory proteins. Comparison of *M. tuberculosis* H37Rv and weakened *M. bovis* BCG Copenhagen showed 39 specific protein pieces for *M. tuberculosis* which had 27 different proteins and can be as a candidate of antigens in order to produce new vaccine.

Xing Xiong et al [9] investigated the membrane proteins of *M. tuberculosis* H37Rv using one-dimensional electrophoresis and mass spectrometry and reported 349 integral fully membrane proteins and 42 membrane proteins was discussed for the first time.

Malen et al [17] compared membrane proteins of *M. tuberculosis* H37Rv and H37Ra strains and examined the properties of more than 1700 proteins of both strains. Almost all identified proteins were too much similar, although strains were different in 5 or more proteins in 29 membrane or membrane associated proteins. 19 proteins and lipoproteins were the most frequent in H37Rv, while 10 proteins had the most frequency in H37Ra. 66 lipoproteins were the same in both strains, although 7 and 3 lipoproteins were just observed in H37Rv and H37Ra, respectively. Standard strains of ATCC and solid medium (7H10) were used in this study. Singhal et al [18] examined the intra cellular proteins of *M. tuberculosis* clinical isolates. Susceptible to drug *M. tuberculosis* (susceptible to at least 5 first-line drugs of ST-11 EA13-IND family) and resistant to drug *M. tuberculosis* (resistant to isoniazid rifampin and streptomycin from st288-CAS2 family) were selected from pulmonary disease center of JALMA (India). The liquid Sautons medium was used and bacteria were isolated in the late exponential phase (third week). Some protein were upregulate in comparison of 2DE and MS. 4 proteins were common in both groups AND 3 proteins belonged to metabolism and bacterial respiratory chain specifically. Results indicated that most proteins of upregulate / expressed were related to cellular metabolism and bacterial respiratory. Macrophage cell culture (THP-1) and cell infection with mycobacterium are also used. Overall, identified proteins

contribute to bacteria compatibility with the environment and understanding the protein action is consistent with macrophage condition. Induction of their expression in in vitro may result in the interpretation of *M. tuberculosis* strategy in creation of infection and increase of TB cell survival. Accurate identification of the proteins allows us to involve them in structural operation of TB and growth of mycobacterium in the environment [18]. Shi et al [19] investigated the use of zinc in mice food for the cellular and humoral immune response with antigens ESAT-6 and CEP10 of *Mycobacterium bovis* BCG strains causes a drop in plasma cytokine levels. This has not caused changes in effect of immunization by these antigens at the time of vaccination. When comparing the bands of susceptible *M. tuberculosis* in the current study with membrane proteins of *M. tuberculosis* H37Rv in the Xiong [9] study it can be state that clinical sample and standard strain of H37Rv are the same in terms of protein expression. Among main differences of the current study and the Xiong study, protein bands of 45 and 60 KDa can be noted.

It seems that the expression differences of protein bands of the two strains probably can be used as marker protein and even effective biomarker in differentiation of susceptible *M. tuberculosis* and *M. bovis* from each other in the case of more comprehensive purification and using a suitable method because differentiation of strains is important in cases that their distinguishing is not completely clear. Treatment of patients with *M. bovis* and *M. tuberculosis* is usually similar. Thus, difference of protein profile between these strains result in the early diagnosis and separation and consequently reducing health care costs. Selection of specific proteins able to show the differences of the strains can cause determination of these proteins to be as appropriate diagnostic biomarker. So that observation of differences in protein bands in the current study can be the beginning of different profile selection to determine the suitable candidate protein.

In this study, complementary studies including two-dimensional electrophoresis and mass spectrometry for protein difference in the observed weighted ranges will lead to more efficient purification of these Proteins in the future. Moreover, the protein difference can be useful to identify effective isotopes in immune responses of the host.

Acknowledgment

This research was supported by Tehran University of Medical Sciences and Health Services Grant 22146.

References

1. Global tuberculosis Report. 2015. World health organization, 2015
2. World Health Organization. Global tuberculosis control; surveillance planning, financing. WHO Report. Geneva, Switzerland: WHO; 2014.
3. Majoor CJ, Magis-Escurra C, Van Ingen J, Boeree MJ, Van Soolingen D. Epidemiology of *Mycobacterium bovis* disease in humans, The Netherlands, 1993–2007. *Emerg Infect Dis*. 2011;17:457-63.
4. Somoskovi A, Dormandy J, Parsons LM, Kaswa M, SengGoh K, Rastogi N, et al. Sequencing of the *pncA* gene in members of the *Mycobacterium tuberculosis* complex has important diagnostic applications: identification of a species-specific *pncA* mutation in “*Mycobacterium canettii*” and the reliable and rapid predictor of pyrazinamide resistance. *JCM*. 2007;45:595-99.
5. Barouni AS, Augusto CJ, Lopes MT, Zanini MS, Salas CE. A *pncA* polymorphism to differentiate between *Mycobacterium bovis* and *Mycobacterium tuberculosis*. *Mol Cell Probes*. 2004;18:167–70.
6. Monteros LE, Galan JC, Gutierrez M, Samper S, Garcia Marin JF, Martin C, et al. Allele-specific PCR method based on *pncA* and *oxyR* sequences

- for distinguishing *Mycobacterium bovis* from *Mycobacterium tuberculosis*: intraspecific *M. bovis* sequence polymorphism. *J Clin Microbiol.* 1998;36:239–42.
7. Barker LF, Brennan MJ, Rosenstein PK, Sadoff JC. Tuberculosis vaccine research: the impact of immunology. *Curr Opin Immunol* 2009;21:331-38.
 8. Sonnenberg MG, Belisle JT. Definition of *Mycobacterium tuberculosis* culture filtrate proteins by two-dimensional polyacrylamide gel electrophoresis, N terminal amino acid sequencing, and electrospray mass spectrometry. *Infect Immun* 1997; 65:4515-24.
 9. Xiong Y, Chalmers MJ, Gao FP, Cross TA, Marshall AG. Identification of *Mycobacterium tuberculosis* H37Rv integral membrane proteins by one-dimensional gel electrophoresis and liquid chromatography electrospray ionization tandem mass spectrometry. *J Proteome Res.* 2005;4:855-61.
 10. Mollenkopf HJ, Grod L, Mattow J, Stein M, Knapp B, Ulmer J, et al. Application of mycobacterial proteomics to vaccine design: improved protection by *Mycobacterium bovis* BCG prime-Rv3407 DNA boost vaccination against tuberculosis. *Infect Immun.* 2004;72:6471–79.
 11. Kubica G, Kent P. Public health microbiology. A guide for the lever laboratory. Atlanta, Georgia: Public Health Service, Centers for Disease Control; 1985.
 12. Farnia P, Mohammadi F, Mirsaedi M, Zia Zarifi A, Tabatabaee J, Bahadori M, et al. Bacteriological follow-up of pulmonary tuberculosis treatment: a study with a simple colorimetric assay. *Microbes Infect.* 2004;6:972-76.
 13. Dennison C, ed. A guide to protein isolation. New York: Kluwer Academic Publisher; 2002.
 14. Bradford MM. A rapid and sensitive method for the quantitation of microgram quantities of protein utilizing the principle of protein-dye binding. *Anal Biochem.* 1976;72:248–54.
 15. Cole ST, Brosch R, Parkhill J, Garnier T, Churcher C, Harris D, et al. Deciphering the biology of *Mycobacterium tuberculosis* from the complete genome sequence. *Nature.* 1998 Jun 11;393(6685):537-44.
 16. Mattow J, Schable UE, Schmidt F, Hagens K, Siejak F, Brestrich G, et al. Comparative proteome analysis of culture supernatant proteins from virulent *Mycobacterium tuberculosis* H37Rv and attenuated *M. bovis* BCG Copenhagen. *Electrophoresis.* 2003;24:3405–20.
 17. Malen H, De Suza GA, PathakSh, Softeland T, Wiker HG. Comparison of membrane proteins of *Mycobacterium tuberculosis* H37Rv and H37Ra strains. *BMC Microbiol.* 2011;11:18.
 18. Singhal N, Sharma P, Kumar M, Joshi B, Bisht D. Analysis of intracellular expressed proteins of *Mycobacterium tuberculosis* clinical isolates. *Proteome Sci.* 2012 Mar 1;10(1):14. DOI: 10.1186/1477-5956-10-14.
 19. Shi L, Zhang L, Li C, Hu X, Wang X, Huang Q, Zhou G. Dietary zinc deficiency impairs humoral and cellular immune responses to BCG and ESAT-6/CFP-10 vaccination in offspring and adult rats. *Tuberculosis (Edinb).* 2016 Mar;97:86-96.